



## Private Markets

Private Equity Partners

# On the Historical Outperformance of Private Equity

An evaluation of private equity  
returns compared to their  
respective public market  
equivalents

**BlackRock**

FOR INSTITUTIONAL, FINANCIAL PROFESSIONAL, PERMITTED, QUALIFIED CLIENT AND PROFESSIONAL,  
INSTITUTIONAL, WHOLESALE, QUALIFIED INVESTOR USE ONLY

# On the Historical Outperformance of Private Equity

Private Equity Partners

August 2024

## Market insights contributors



**Jeroen Cornel**  
Senior Product Strategist,  
Private Equity Partners



**Kyle McDermott**  
Product Strategist,  
Private Equity Partners



**Yamona Win**  
Product Strategist,  
Private Equity Partners

## Table of Contents

1. Introduction	2
2. Absolute and relative performance	3
3. Dispersion of outperformance across funds	5
4. Outperformance across market	6
5. The critics	7
6. Wrapping up	9

## 1. Introduction

Institutional investors have increasingly turned to private markets to meet their return requirements. As a result, private equity, being one of the more mature and established components of the private markets universe, has seen phenomenal growth and is now considered less “alternative” and more “core” to an institutional investor’s overall portfolio [BII 2017, BII 2019].

Typically, investors allocate to private equity with a target to achieve a higher return than obtained in public or listed equity. Such outperformance is often attributed to a combination of operational improvements, active ownership, more direct corporate governance, better alignment of interests, longer investment horizons and financial leverage [Puche 2015].

This article studies the outperformance or alpha of private equity funds and finds materials outperformance across the board. All results shown here are objective market data, and no assumptions or amendments were made to the data<sup>1</sup>.

<sup>1</sup> Private equity funds are defined as buyout, venture capital (late stage and generalist) and expansion capital (growth), and all returns are net of management and performance fees. Source: Burgiss, vintages 2005-2021, 2,909 funds, USD 3,592 billion in market capitalization as of 31 December 2023.

## 2. Absolute and relative performance

Figure 1 shows the value, on 31 December 2023, of USD 100 invested in five different financial instruments on 1 January 2005<sup>2</sup>, assuming reinvestment of all proceeds. Private equity clearly shows the highest returns with an ending value of USD 783, equating to an annual time-weighted return of 11.6% - an outperformance of 2.4% and 5.0% over the S&P 500 and MSCI World indices, respectively.

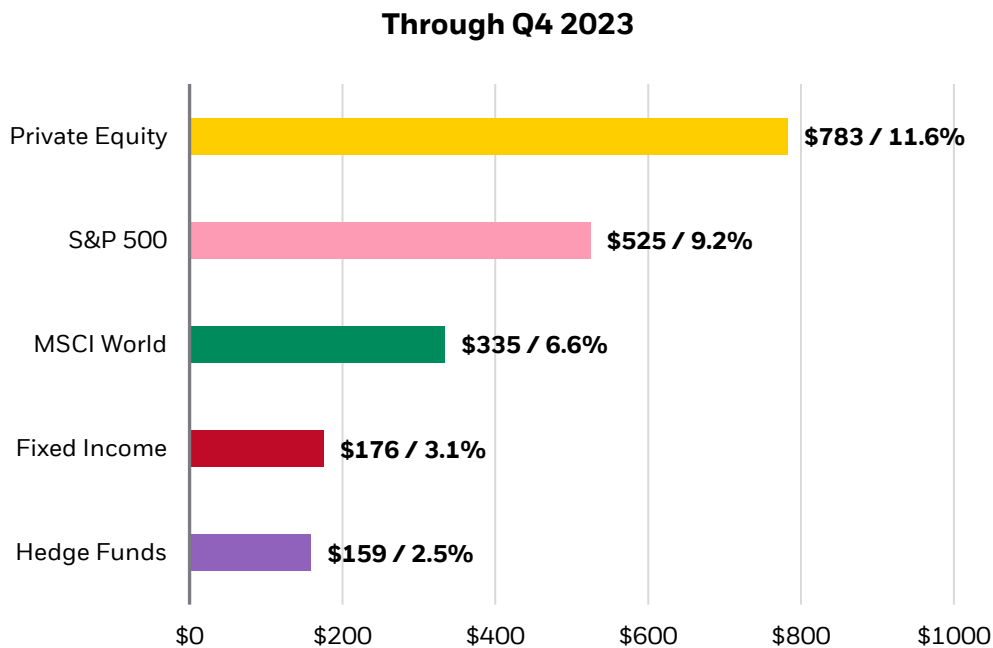


Figure 1: **Indexes are unmanaged, and one cannot invest directly in an index. Past performance is not a guarantee or a reliable indicator of future results.** Value of USD 100 invested into five financial instruments on 1 January 2005. Private equity: Burgiss; Fixed income: Barclays US Aggregated Bond index; Hedge funds: HFRI FOF index; both MSCI World and S&P 500 represent total return indices. Private Equity data sourced from Burgiss covers vintages 2005-2021, 2,909 funds, USD 3,592 billion in market capitalization, sourced as of 31 December 2023. Private equity strategies include Buyout, VC (Late), VC (Generalist), and Expansion Capital. All dollar figures are USD.

However, as opposed to public equity investments where the investor is immediately fully invested, private equity managers call committed capital from their investors over time as they find investment opportunities and distribute principal and gains as investments are exited. For this reason, the timing and size of cash flows is more important than in more traditional asset classes. Private equity practitioners do not typically report time-weighted returns as in Figure 1 but analyze and report performance in a money-weighted performance metric, such as the internal rate of return (IRR). The money-weighted mechanic of the IRR better reflects the timing and size of the underlying cash flows. In addition, Total Value to Paid-in Capital (TVPI) and other multiples are used to reflect cash-on-cash returns.

Various methods can be used to estimate the outperformance of private equity; however, the direct alpha method is the generally accepted method, yielding the most reliable and accurate results [Gredil 2014]<sup>3</sup>.

Figure 2 shows the IRR (black bars) of all funds within each of 17 vintage years as of 31 December 2023. Also shown are four different pooled IRRs for the aggregate of all the underlying funds, three different point-to-point IRRs for 5, 10 and 15 years, and one for the total time period. The IRR of the MSCI World index<sup>4</sup> (red bars) is calculated using the actual cash flows of the private equity funds. Each contribution is invested into the public index and each distribution is treated as a sale out of the public index on the exact same day as the actual cash flow occurs. As a result, the buying and selling characteristics mimic the actual cash flows of the private equity investment and the return tracks the return of the public index. The pooled outperformance, or direct alpha, of each vintage year and each pooled aggregate is shown in the green boxes. Table 1 tabulates those IRRs and shows the TVPI and outperformance over the same index.

<sup>2</sup>All data is sourced as of 31 December 2023.

<sup>3</sup>The Direct Alpha method proposed by Gredil, Griffiths, and Stucke is both a robust and a reliable measure, formalizing the calculation of the exact alpha that a portfolio has generated relative to the chosen reference benchmark. It provides a direct calculation of the portfolio alpha compared to alternative public market equivalent methods which estimate performance indirectly. The equivalent of the direct alpha method for Total Value to Paid-in (TVPI) is the KS-PME method, proposed by Kaplan and Schoar. For instance, a 1.16x means that the PE investment has generated a 16% outperformance over the listed index over the whole holding period.

<sup>4</sup>All indices used in this work are total return indices.

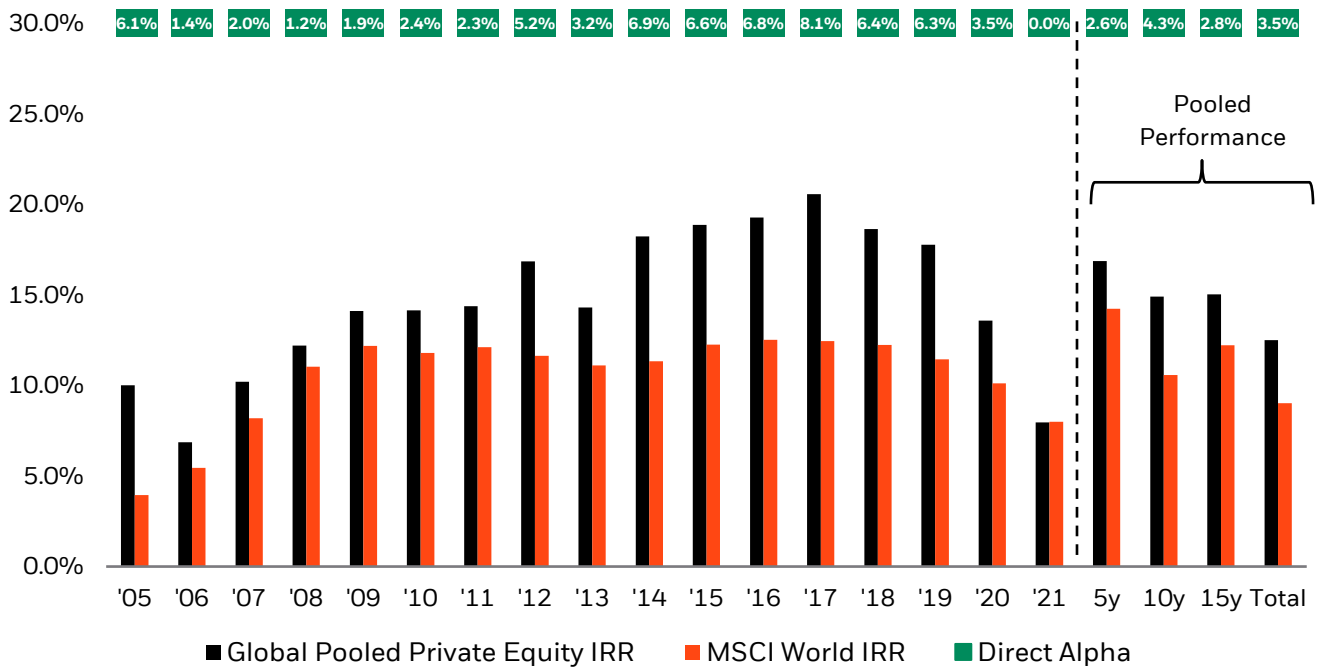


Figure 2: Indexes are unmanaged, and one cannot invest directly in an index. Indexes are unmanaged and one cannot invest directly in an index. Past performance is not a guarantee or a reliable indicator of future results. Global private equity fund pooled, absolute and relative performance against the MSCI World index for 17 vintage years and 4 pooled aggregates all in USD. MSCI World IRR is inferred from the absolute performance and the direct alpha. Total is representative of the since inception figures. Private Equity data from Burgiss Private iQ covers vintages 2005-2021, 2,909 funds, USD 3,592 billion in market capitalization, sourced as of 31 December 2023. Private equity strategies include Buyout, VC (Late), VC (Generalist), and Expansion Capital.

Detailed performance of Global Private Equity Funds as of 31 December 2023																					
	'05	'06	'07	'08	'09	'10	'11	'12	'13	'14	'15	'16	'17	'18	'19	'20	'21	Since Inception	5-year	10-year	15-year
Global IRR	10.0%	6.9%	10.2%	12.2%	14.1%	14.1%	14.4%	16.9%	14.3%	18.2%	18.9%	19.3%	20.6%	18.6%	17.8%	13.6%	8.0%	12.5%	16.9%	14.9%	15.0%
Direct Alpha	6.1%	1.4%	2.0%	1.2%	1.9%	2.4%	2.3%	5.2%	3.2%	6.9%	6.6%	6.8%	8.1%	6.4%	6.3%	3.5%	0.0%	3.5%	2.6%	4.3%	2.8%
Global TVPI	1.64x	1.48x	1.70x	1.67x	1.86x	2.05x	1.91x	2.04x	1.83x	2.18x	2.01x	2.03x	1.95x	1.67x	1.47x	1.31x	1.13x	1.66x	1.45x	1.48x	1.64x
KS PME	1.29x	1.07x	1.09x	1.05x	1.08x	1.12x	1.10x	1.22x	1.14x	1.32x	1.28x	1.28x	1.31x	1.20x	1.16x	1.07x	1.00x	1.14x	1.07x	1.14x	1.12x

Table 1: Indexes are unmanaged, and one cannot invest directly in an index. Indexes are unmanaged and one cannot invest directly in an index. Indexes are unmanaged and one cannot invest directly in an index. Past performance is not a guarantee or a reliable indicator of future results. Tabular representation of figure 2. Direct Alpha and KS-PME are both based on the MSCI World index. Private Equity data from Burgiss covers vintages 2005-2021, 2,909 funds, USD 3,592 billion in market capitalization, sourced as of 31 December 2023. Private equity strategies include Buyout, VC (Late), VC (Generalist), and Expansion Capital.

First and foremost, the direct alpha or pooled outperformance over the MSCI World index in all 17 vintages is positive, clearly demonstrating that private equity funds outperformed this public equity market. Vintage years '06, '07 and '08 are generally considered difficult private equity vintages with record capital raised and, partially because of that, disappointing performance (lower IRRs). However, these vintages still show a clear outperformance over listed equity. In aggregate and since inception, the direct alpha over these 17 vintage years (2005-2021) is 3.5%.

This pooled outperformance is also substantial, when looking at different time windows, and ranges from 2.6% for 5 years to 2.8 % for 15 years. The equivalent outperformance on an absolute basis for TVPI ranges from 7% for 5 years to 12% for 15 years.

Figure 2 showed the performance of a global universe of private equity funds against a global equity market index. However, does that strong performance persist when looking at different regions separately? Table 2 shows the same outperformance analysis but now for US private equity funds benchmarked against the S&P 500 and for European funds benchmarked against the MSCI Europe index.

Region	Direct Alpha [%]			
	5-year	10-year	15-year	Since Inception
United States (USD)	2.2%	3.8%	1.8%	2.5%
Europe (EUR)	5.7%	8.7%	5.7%	5.8%

Table 2: **Indexes are unmanaged, and one cannot invest directly in an index. Indexes are unmanaged and one cannot invest directly in an index. Past performance is not a guarantee or a reliable indicator of future results.** Regional outperformance of private equity funds over different time windows<sup>1</sup>. US private equity sample consists of 1,737 funds, representing a total capitalization of USD 2.15 trillion. Europe private equity sample consists of 598 funds, representing a total capitalization of €663.2 billion. Data covers vintages 2005-2021 and strategies: Buyout, VC (Late), VC (Generalist), and Expansion Capital, sourced as of 31 December 2023.

Table 2 demonstrates that the outperformance of private equity funds remains substantial also on a regional level when benchmarked against the respective regional indices. It should be noted that European private equity funds are benchmarked against the MSCI Europe index in EUR and outperformance appears to be even stronger than shown in Figure 2.

### 3. Dispersion of outperformance across funds

All results in section 2 represent the pooled performance of thousands of private equity funds. It is well-documented that the dispersion between the returns of these different private equity funds is 3 to 4 times larger than that of funds investing in listed equity [BII 2017]. For this reason, the selection of individual managers is of paramount importance when investing in private equity. Additionally, performance persistence is slowly dissipating, especially for buyout managers, making selection even more crucial. [Harris 2014].

Figure 3 shows the outperformance of the same universe of private equity funds as in Figure 2. However, in addition to showing the pooled outperformance (+), it also depicts the median (-) and each vertical bar represents the interquartile range between the 25th and 75th percentile performing funds.

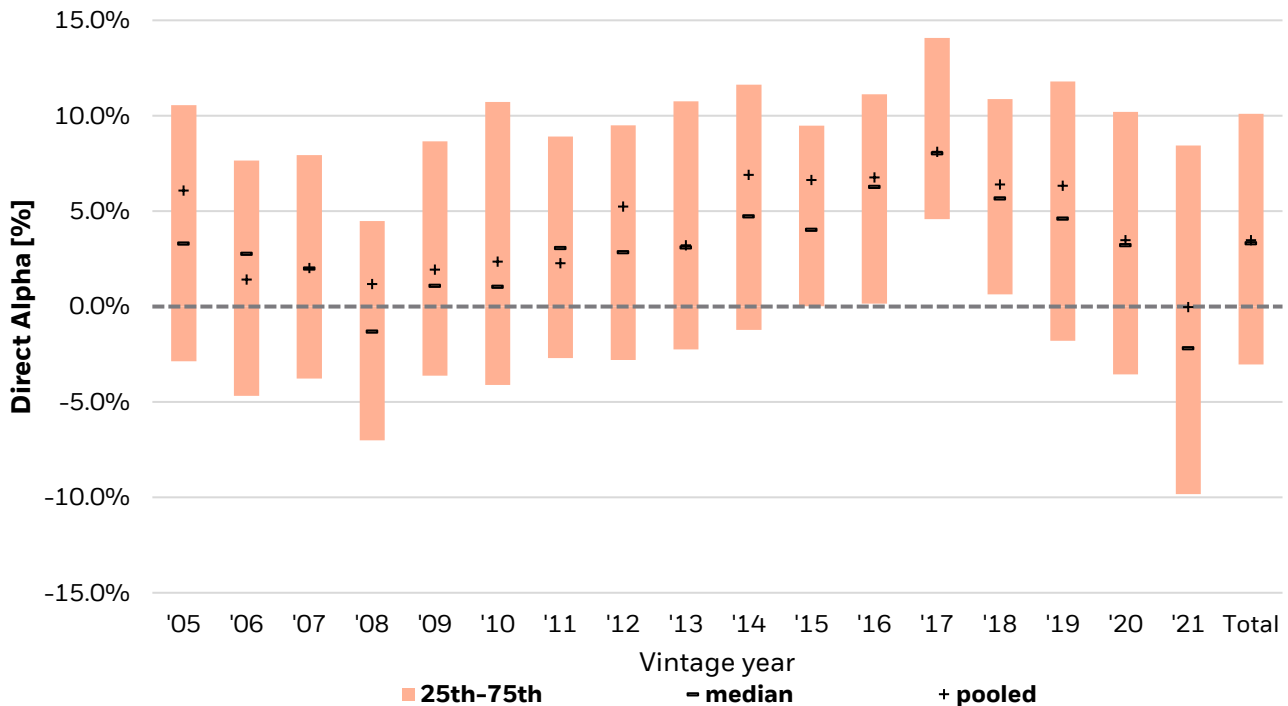


Figure 3: Indexes are unmanaged, and one cannot invest directly in an index. Indexes are unmanaged and one cannot invest directly in an index. Indexes are unmanaged and one cannot invest directly in an index. Past performance is not a guarantee or a reliable indicator of future results. Time evolution of direct alpha and dispersion thereof over time – all in USD1. Private Equity data sourced from Burgiss covers vintages 2005-2021, 2,909 funds, USD 3,592 billion in market capitalization, sourced as of 31 December 2023. Private equity strategies include Buyout, VC (Late), VC (Generalist), and Expansion Capital.

As it can be seen, pooled outperformance in each bar is the same as in Figure 2, however the dispersion between bottom and top quartile performing funds can be as large as 13 %. Since the mid-2000s the dispersion of performance seems to have stabilized – dispersion in younger vintages is amplified and is expected to reduce in the coming years. In aggregate, the pooled and median outperformance is 3.5% and 3.3%, respectively. Private equity professionals use their own lexicon and comparing performance can often be confusing for investors less familiar with the asset class. Percentiles such as the median and mean or average performance are unweighted performance metrics. In a capital weighted or pooled metric all cash flows are aggregated by paid-in capital when calculating performance. The pooled metric is deemed more relevant as it is more robust against small funds with under- or outperformance. A capital weighted or pooled metric is also less influenced by funds that are still in their J-curve as these funds are still calling capital and hence have a relatively small weight in the aggregate. This is certainly not the case for a median or simple mean. This is the reason why in Figure 3 in most vintages the pooled outperformance is higher than the median, indicating that larger funds show on average a better performance compared to smaller funds. This is amplified by the fact that returns in private equity are skewed to the right [Braun 2019]. On the other hand, in a pooled metric, the cash flows are discounted to inception and hence, especially when aggregating over a long-time horizon, more recent investments have a smaller weight and hence the metric might be interpreted as less relevant for the current performance.

## 4. Outperformance across market cycles

The empirical results shown thus far represent the historical outperformance of a universe of private equity funds aggregated per vintage year as of 31 December 2023, however, the variation or volatility of this outperformance over time is not displayed. Figure 4 displays the direct alpha over time across the same universe.

The universe shown is growing over time when new funds are raised and invested. The endpoints of Figure 3 and Figure 4 are the same, i.e. the pooled and median outperformance is 3.5% and 3.3 %, respectively.

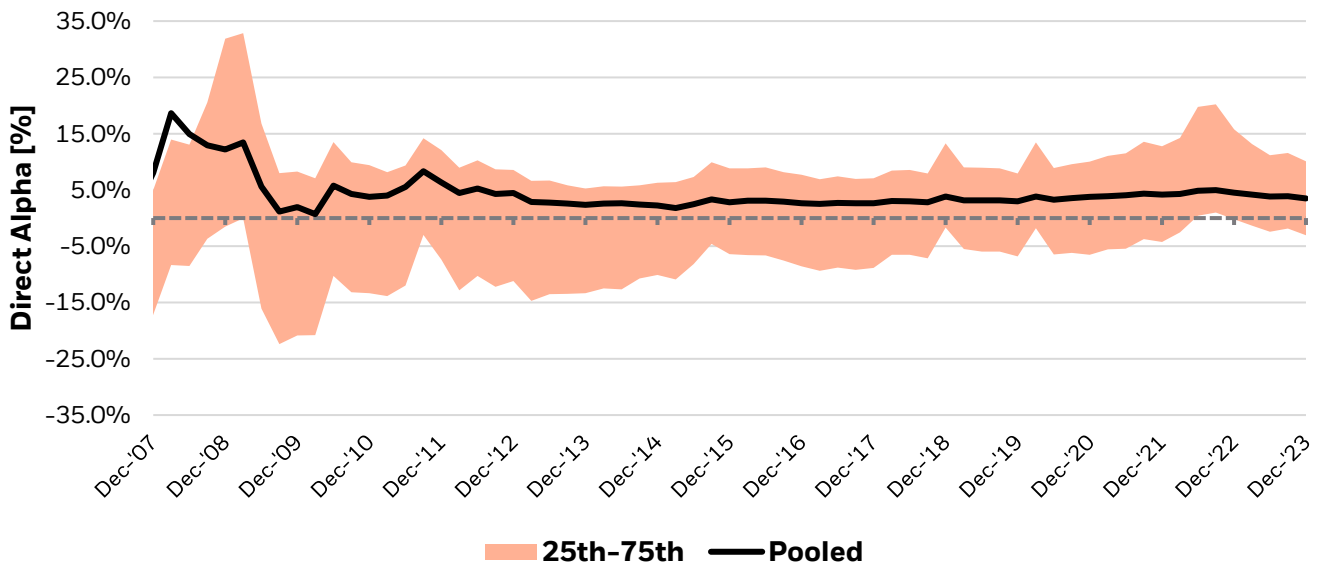


Figure 4: **Indexes are unmanaged, and one cannot invest directly in an index.** Past performance is not a guarantee or a reliable indicator of future results. Time evolution of direct alpha and dispersion thereof over time – all in USD. Private Equity data sourced from Burgiss covers vintages 2005-2021, 2,909 funds, USD 3,592 billion in market capitalization, sourced as of 31 December 2023. Private equity strategies include Buyout, VC (Late), VC (Generalist), and Expansion Capital.

As shown in Figure 4, the outperformance over the MSCI World index is volatile and is especially high during times that public equity markets declined, i.e. during the global financial crisis (2008-2009) and the European debt crisis (2011) where outperformance peaks at double digit figures. It is well-known that private equity valuations are smoothed and delayed [Jenkinson 2013], which explains some of this increased outperformance. Over recent years the outperformance has stabilized and is decreasing moderately mostly due to the lasting public equity rally fueled by monetary policies, except for small peaks during COVID-19 crisis. Early years show that a pooled or capital weighted metric and an unweighted percentile can indeed behave very differently. The early 2000s are characterized by the dotcom bubble and disappointing performance for venture capital. Venture funds are typically smaller than buyout funds and hence their weight in a capital weighted metric is reduced compared to unweighted metrics such as median or other percentiles. This explains the large difference between pooled returns and percentiles in the late 2000s. For the same reason the unweighted outperformance will typically be lower than the weighted, pooled outperformance as seen across the analyzed time horizon, a result of young funds being continuously added to the universe. These funds go through their J-curve and because they have called only a small amount capital relative to their size, they do not weigh that strongly in a pooled metric as compared to percentiles.

## 5. The critics

While the aforementioned analyses demonstrate outperformance of private equity over a broad index of listed companies, critics often challenge this alpha and there is ongoing debate, with a significant divergence, on risk-adjusted performance of private equity.

Certainly, these privately-owned companies are on the smaller end of the capitalization spectrum, and the enterprise value can easily be one or two orders of magnitude lower than that of companies in listed equity indices. The analysis below shows the outperformance of US private equity funds over several indices measuring the performance of US listed companies. The second column indicates the median market capitalization of the companies that make up the listed index. Roughly, the total enterprise value of mid/large-market buyout deals ranges from USD 50m to USD 1,000m<sup>5</sup>. Recent market data shows debt-to-equity ratios of roughly 1.0x - 1.4x, implying the equity invested (market cap) ranges from USD 21m to USD 500m<sup>6</sup>. This puts private equity closer to the Russell 2000 and Russell Microcap indices.

	Median Market Cap (\$mn)	5-year	10-year	15-year	Since Inception
<b>S&amp;P 500</b>	\$36,305m	2.2%	3.8%	1.8%	2.5%
<b>MSCI World</b>	\$17,108m	2.6%	4.3%	2.8%	3.5%
<b>Russell 1000</b>	\$14,981m	2.4%	4.0%	1.7%	2.5%
<b>Russell 2000</b>	\$996m	7.5%	8.5%	4.0%	4.5%
<b>Russell Microcap</b>	\$243m	8.8%	9.9%	4.5%	5.6%

Table 3: **Indexes are unmanaged, and one cannot invest directly in an index. Indexes are unmanaged and one cannot invest directly in an index. Indexes are unmanaged and one cannot invest directly in an index. Past performance is not a guarantee or a reliable indicator of future results.** All \$ figures in USD millions. Direct alpha and market capitalization by respective index. Direct alpha data provided by Burgiss Private iQ as of 31 December 2023. Market cap data for the Russell 1000, Russell 2000, and Russell Microcap provided by FTSE Russell as of 31 July 2024. Market cap data for the S&P 500 provided by S&P Dow Jones Indices as of 31 July 2024. Market cap data for the MSCI World provided by MSCI as of 31 July 2024. Private Equity data sourced from Burgiss covers vintages 2005-2021, 2,909 funds, USD 3,592 billion in market capitalization, sourced as of 31 December 2023. Private equity strategies include Buyout, VC (Late), VC (Generalist), and Expansion Capital.

As it can be seen, the outperformance over small cap indices is either similar or higher than the outperformance over large cap indices, raising the question if private equity returns are at all subject to a small cap premium. Other scholars [L’Her 2017] have reported that a large component of the outperformance in aggregate in certain vintage years is explained by adjusting for capitalization. Yet, the volatility of such small cap indices is significantly larger and such analysis depends strongly on which vintage years are included and which reporting date is used [Brown 2019]

Other scholars also adjust such small cap indices for leverage and sector biases and claim to replicate private equity returns through value investing and longer holding periods [Stafford 2016]. In such case, a portion of the total alpha of private equity, depending on the time window, may be replicated. However, one should put important caveats when pursuing such investment strategies.

First, such strategies aim to replicate the average, or median return of private equity. As outlined in section 3, an investor in private equity does not aim to obtain an average return, even though such an average is already significantly outperforming all listed markets considered in this article. Instead, investors aim to generate additional alpha through manager selection and generate above average returns.

Second, investors do not have access to these privately-owned firms other than through private equity funds. Companies that are too small or unsuitable for public ownership, as well as businesses in the early and growth stages, can only be accessed through private equity. Market data shows that the universe of private companies is growing, whereas the universe of listed companies is decreasing [BII 2017]. By allocating to private equity, an investor expands the opportunity set and diversifies the overall universe of underlying investments and hence should expect enhanced risk-adjusted returns.

Third, investors can further add incremental alpha and increase net returns by allocating to tactical investment strategies such as secondaries and co-investments that are now an integral and well-established component of the private equity market [BlackRock PEP 2022].

<sup>5</sup>Source: Bain & Company “Global Private Equity Report 2019,” and European Private Equity and Venture Capital Association (“EVCA”) “European Mid-Market Private Equity – Delivering The Goods.”

<sup>6</sup>Source: McKinsey Global Private Markets Review 2018 – “The rise and rise of private markets.” Data from the McKinsey report was sourced from PitchBook.



Additionally, some scholars and industry practitioners claim private equity performs poorly during times of financial duress because of increased leverage in conjunction with the highly cyclical private equity fundraising cycle. However, market data from the 2008 recession suggests the opposite is true. It is shown that private equity-backed companies cut investments less than their peers during the crisis and experienced higher asset growth and market share. In addition, private companies experience resiliency during downturns as they have greater access to external funding when financial markets are dysfunctional. During the crisis, net equity contributions and debt issuances were larger for private equity backed companies; however, leverage was not materially increased due to improvements in profitability and market share. The aforementioned analysis suggests private equity firms alleviated financing constraints of portfolio companies during the financial crisis, allowing them to invest more when credit markets were frozen and economic uncertainty was high. Companies financed by private equity funds with high dry powder levels had greater debt issuances and more importantly, larger equity injections given the availability of capital. Altogether, these results are inconsistent with the hypothesis that private equity contributed to the fragility of the economy in the last financial crisis [Bernstein 2017].

In the current market environment, a larger percentage of equity and lower cost of debt found in capital structures reduce the risks facing privately owned companies compared to those in 2008. In addition, private equity funds are shifting portfolio companies to less cyclical markets and industries. Instead of treating a contraction as a time to pull back, well positioned private equity backed companies use this time to advance their market position, embrace new investments, and fast-track business and operating model improvements. In a downturn, the number of carve-outs often rises, as corporations refocus on their core business [Ketels 2019].

## **6. Wrapping up**

This work lays out the empirical outperformance of private equity across various benchmarks and market cycles. In a search for alpha, institutional investors have increased allocations to private equity in order to meet return targets. Some practitioners have doubted outperformance related to private equity after accounting for leverage and size biases in the representative benchmarks. However, this paper evaluated private equity against benchmarks representative of the asset class and demonstrates material outperformance in various performance metrics across different time periods and public equity indices.

# References

1. BlackRock Investment Institute, Extracting returns in private markets, December **2017**
2. BlackRock Investment Institute, The role of private markets in modern portfolios, March **2019**
3. BlackRock, Do US buyout funds outperform? *J. Malinowski*, December **2011**
4. BlackRock, Do EMEA buyout funds outperform? *J. Malinowski, J. Wittlin*, May **2014**
5. BlackRock Private Equity Partners (PEP), Constructing optimized private equity programs. *J. Cornel, K. McDermott*, March **2022**
6. Adverse Selection and the Performance of Private Equity Co-Investments. *R. Braun, T. Jenkinson, C. Schemmerl*. Journal of Financial Economics, available online 12 September **2019**
7. International evidence on value creation in private equity transactions. *B. Puche, R. Braun*. Journal of Applied Corporate Finance, 27 (4), **2015**
8. Benchmarking private equity, the direct alpha method. *O. Gredil, B. Griffiths, R. Stucke*, working paper **2014**
9. A bottom-up approach to the risk-adjusted performance of the buyout fund market. *J.F. L'Her et al.* Financial Analysts Journal, 72 (4), **2017**
10. Private equity performance: what do we know? *R. Harris, T. Jenkinson, S. Kaplan*. The Journal of Finance, 69 (5), **2014**
11. Has persistence persisted in private equity? *R. Harris, T. Jenkinson, S. Kaplan, R. Stucke*. Working paper **2014**
12. How fair are the valuations of private equity funds? *T. Jenkinson, M. Sousa, R. Stucke*. Working paper **2013**
13. Replicating Private Equity with Value Investing, Homemade Leverage, and Hold-to-Maturity Accounting. *E. Stafford*, Harvard Business School working paper. January **2016**
14. Have private equity returns really declined? *G. Brown, S. Kaplan*. Kenan Institute Report, April **2019**
15. How Private Equity Can Capture the Upside in a Downturn. *C. Ketels, M. Massi, A. Muzur, J. Öberg and J. Croog*. BCG **2019**
16. Private Equity and Financial Fragility during the Crisis. *S. Bernstein, J. Lerner, F. Mezzanotti*. Working paper **2017**

# Risks

**Capital at risk.** The value of investments and the income from them can fall as well as rise and are not guaranteed. Investors may not get back the amount originally invested.

Past performance is not a reliable indicator of current or future results and should not be the sole factor of consideration when selecting a product or strategy.

Changes in the rates of exchange between currencies may cause the value of investments to diminish or increase. Fluctuation may be particularly marked in the case of a higher volatility fund and the value of an investment may fall suddenly and substantially. Levels and basis of taxation may change from time to time.

# Important Information

This material is provided for educational purposes only and is not intended to be relied upon as a forecast, research or investment advice, and is not a recommendation, offer or solicitation to buy or sell any securities or to adopt any investment strategy. The opinions expressed are as of August 2024 and may not necessarily reflect BlackRock's current view of the market. References to specific securities, asset classes and financial markets are for illustrative purposes only and are not intended to be and should not be interpreted as recommendations. Reliance upon information in this material is at the sole risk and discretion of the reader. The material was prepared without regard to specific objectives, financial situation or needs of any investor.

This material may contain "forward-looking" information that is not purely historical in nature. Such information may include, among other things, projections, forecasts and estimates of yields or returns. No representation is made that any performance presented will be achieved by any BlackRock Funds, or that every assumption made in achieving, calculating or presenting either the forward-looking information or any historical performance information herein has been considered or stated in preparing this material. Any changes to assumptions that may have been made in preparing this material could have a material impact on the investment returns that are presented herein. Past performance is not a reliable indicator of current or future results and should not be the sole factor of consideration when selecting a product or strategy.

The information and opinions contained in this material are derived from proprietary and non-proprietary sources deemed by BlackRock to be reliable, are not necessarily all-inclusive and are not guaranteed as to accuracy.

**In the U.S.**, this material is for Institutional use only – not for public distribution.

**In Canada**, this material is intended for permitted clients only, is for educational purposes only, does not constitute investment advice and should not be construed as a solicitation or offering of units of any fund or other security in any jurisdiction.

**In Latin America**, for Institutional Investors and Financial Intermediaries Only (Not for public distribution). This material is for educational purposes only and does not constitute an offer or solicitation to sell or a solicitation of an offer to buy any shares of any fund (nor shall any such shares be offered or sold to any person) in any jurisdiction in which an offer, solicitation, purchase or sale would be unlawful under the securities law of that jurisdiction. It is possible that some or all of the funds mentioned in this document have not been registered with the securities regulator of Argentina, Brazil, Chile, Colombia, Mexico, Panama, Peru, Uruguay or any other securities regulator in any Latin American country and thus might not be publicly offered within any such country. The securities regulators of such countries have not confirmed the accuracy of any information contained herein. No information discussed herein can be provided to the general public in Latin America.

**In Argentina**, only for use with Qualified Investors under the definition as set by the Comisión Nacional de Valores (CNV).

**In Chile**, The securities if any described in this document are foreign securities, therefore: i) their rights and obligations will be subject to the legal framework of the issuer's country of origin, and therefore, investors must inform themselves regarding the form and means through which they may exercise their rights; and that ii) the supervision of the Commission for the Financial Market (Comisión para el Mercado Financiero or "CMF") will be concentrated exclusively on compliance with the information obligations established in General Standard No. 352 of the CMF and that, therefore, the supervision of the security and its issuer will be mainly made by the foreign regulator;

In the case of a fund not registered with the CMF is subject to General Rule No. 336 issued by the SVS (now the CMF). The subject matter of this sale may include securities not registered with the CMF; therefore, such securities are not subject to the supervision of the CMF. Since the securities are not registered in Chile, there is no obligation of the issuer to make publicly available information about the securities in Chile. The securities shall not be subject to public offering in Chile unless registered with the relevant registry of the CMF.

**IN MEXICO, FOR INSTITUTIONAL AND QUALIFIED INVESTORS USE ONLY. INVESTING INVOLVES RISK, INCLUDING POSSIBLE LOSS OF PRINCIPAL. THIS MATERIAL IS PROVIDED FOR EDUCATIONAL AND INFORMATIONAL PURPOSES ONLY AND DOES NOT CONSTITUTE AN OFFER OR SOLICITATION TO SELL OR A SOLICITATION OF AN OFFER TO BUY ANY SHARES OF ANY FUND OR SECURITY.** This information does not consider the investment objectives, risk tolerance or the financial circumstances of any specific investor. This information does not replace the obligation of financial advisor to apply his/her best judgment in making investment decisions or investment recommendations. It is your responsibility to inform yourself of, and to observe, all applicable laws and regulations of Mexico. If any funds, securities or investment strategies are mentioned or inferred in this material, such funds, securities or strategies have not been registered with the Mexican National Banking and Securities Commission (Comisión Nacional Bancaria y de Valores, the “CNBV”) and thus, may not be publicly offered in Mexico. The CNBV has not confirmed the accuracy of any information contained herein. The provision of investment management and investment advisory services (“Investment Services”) is a regulated activity in Mexico, subject to strict rules, and performed under the supervision of the CNBV. These materials are shared for information purposes only, do not constitute investment advice, and are being shared in the understanding that the addressee is an Institutional or Qualified investor as defined under Mexican Securities (Ley del Mercado de Valores). Each potential investor shall make its own investment decision based on their own analysis of the available information. Please note that by receiving these materials, it shall be construed as a representation by the receiver that it is an Institutional or Qualified investor as defined under Mexican law. BlackRock México Operadora, S.A. de C.V., Sociedad Operadora de Fondos de Inversión (“BlackRock México Operadora”) is a Mexican subsidiary of BlackRock, Inc., authorized by the CNBV as a Mutual Fund Manager (Operadora de Fondos), and as such, authorized to manage Mexican mutual funds, ETFs and provide Investment Advisory Services. For more information on the Investment Services offered by BlackRock Mexico, please review our Investment Services Guide available in [www.blackrock.com/mx](http://www.blackrock.com/mx). This material represents an assessment at a specific time and its information should not be relied upon by the you as research or investment advice regarding the funds, any security or investment strategy in particular. Reliance upon information in this material is at your sole discretion. BlackRock México is not authorized to receive deposits, carry out intermediation activities, or act as a broker dealer, or bank in Mexico. For more information on BlackRock México, please visit: [www.blackrock.com/mx](http://www.blackrock.com/mx). BlackRock receives revenue in the form of advisory fees for our advisory services and management fees for our mutual funds, exchange traded funds and collective investment trusts. Any modification, change, distribution or inadequate use of information of this document is not responsibility of BlackRock or any of its affiliates. Pursuant to the Mexican Data Privacy Law (Ley Federal de Protección de Datos Personales en Posesión de Particulares), to register your personal data you must confirm that you have read and understood the Privacy Notice of BlackRock México Operadora. For the full disclosure, please visit [www.blackrock.com/mx](http://www.blackrock.com/mx) and accept that your personal information will be managed according with the terms and conditions set forth therein.

**In Peru,** this material is for the sole use of Institutional Investors, as such term is defined by the Superintendencia de Banca, Seguros y AFP.

**For investors in Central America,** these securities have not been registered before the Securities Superintendence of the Republic of Panama, nor did the offer, sale or their trading procedures. The registration exemption has made according to numeral 3 of Article 129 of the Consolidated Text containing of the Decree-Law No. 1 of July 8, 1999 (institutional investors). Consequently, the tax treatment set forth in Articles 334 to 336 of the Unified Text containing Decree-Law No. 1 of July 8, 1999, does not apply to them. These securities are not under the supervision of the Securities Superintendence of the Republic of Panama. The information contained herein does not describe any product that is supervised or regulated by the National Banking and Insurance Commission (CNBS) in Honduras. Therefore any investment described herein is done at the investor’s own risk. If any recipient of this documentation receives this document in El Salvador, such recipient acknowledges that the same has been delivered upon their request and instructions, and on a private placement basis. In Guatemala, this communication and any accompanying information (the “Materials”) are intended solely for informational purposes and do not constitute (and should not be interpreted to constitute) the offering, selling, or conducting of business with respect to such securities, products or services in the jurisdiction of the addressee (this “Jurisdiction”), or the conducting of any brokerage, banking or other similarly regulated activities (“Financial Activities”) in the Jurisdiction. Neither BlackRock, nor the securities, products and services described herein, are registered (or intended to be registered) in the Jurisdiction. Furthermore, neither BlackRock, nor the securities, products, services or activities described herein, are regulated or supervised by any governmental or similar authority in the Jurisdiction. The Materials are private, confidential and are sent by BlackRock only for the exclusive use of the addressee. The Materials must not be publicly distributed and any use of the Materials by anyone other than the addressee is not authorized. The addressee is required to comply with all applicable laws in the Jurisdiction, including, without limitation, tax laws and exchange control regulations, if any.

**For investors in the Caribbean**, any funds mentioned or inferred in this material have not been registered under the provisions of the Investment Funds Act of 2003 of the Bahamas, nor have they been registered with the securities regulators of Bermuda, Dominica, the Cayman Islands, the British Virgin Islands, Grenada, Trinidad & Tobago or any jurisdiction in the Organisation of Eastern Caribbean States, and thus, may not be publicly offered in any such jurisdiction. Engaging in marketing, offering or selling any fund from within the Cayman Islands to persons or entities in the Cayman Islands may be deemed carrying on business in the Cayman Islands. As a non-Cayman Islands person, BlackRock may not carry on or engage in any trade or business unless it properly registers and obtains a license for such activities in accordance with the applicable Cayman Islands law. In the Dominican Republic, any securities mentioned or inferred in this material may only be offered in a private character according to the laws of the Dominican Republic, falling beyond the scope of articles 1 numeral (31), 46 et al of Law 249-17 dated 19 December 2017, as amended and its Regulations. Since no governmental authorizations are required in such offering, any “securities” mentioned or inferred in this material have not been and will not be registered with the Stock Market Superintendency of the Dominican Republic (Superintendencia de Mercado de Valores de la República Dominicana), and these “securities” may only be circulated, offered and sold in the Dominican Republic in a private manner based on the criteria established under Dominican laws and regulations.

**In Uruguay**, the Securities are not and will not be registered with the Central Bank of Uruguay. The Securities are not and will not be offered publicly in or from Uruguay and are not and will not be traded on any Uruguayan stock exchange. This offer has not been and will not be announced to the public and offering materials will not be made available to the general public except in circumstances which do not constitute a public offering of securities in Uruguay, in compliance with the requirements of the Uruguayan Securities Market Law (Law N° 18.627 and Decree 322/011).

**This material is for distribution to Professional Clients (as defined by the Financial Conduct Authority or MiFID Rules) only and should not be relied upon by any other persons.**

**In the UK and Non-European Economic Area (EEA) countries:** this is Issued by BlackRock Investment Management (UK) Limited, authorised and regulated by the Financial Conduct Authority. Registered office: 12 Throgmorton Avenue, London, EC2N 2DL. Tel: + 44 (0)20 7743 3000. Registered in England and Wales No. 02020394. For your protection telephone calls are usually recorded. Please refer to the Financial Conduct Authority website for a list of authorised activities conducted by BlackRock.

**In the European Economic Area (EEA):** this is Issued by BlackRock (Netherlands) B.V. is authorised and regulated by the Netherlands Authority for the Financial Markets. Registered office Amstelplein 1, 1096 HA, Amsterdam, Tel: 020 – 549 5200, Tel: 31-20-549-5200. Trade Register No. 17068311 For your protection telephone calls are usually recorded.

**In Italy:** For information on investor rights and how to raise complaints please go to <https://www.blackrock.com/corporate/compliance/investor-right> available in Italian.

**For qualified investors in Switzerland:** This document is marketing material.

This document shall be exclusively made available to, and directed at, qualified investors as defined in Article 10 (3) of the CISA of 23 June 2006, as amended, at the exclusion of qualified investors with an opting-out pursuant to Art. 5 (1) of the Swiss Federal Act on Financial Services (“FinSA”).

For information on art. 8 / 9 Financial Services Act (FinSA) and on your client segmentation under art. 4 FinSA, please see the following website: [www.blackrock.com/finsa](http://www.blackrock.com/finsa).

Any research in this document has been procured and may have been acted on by BlackRock for its own purpose. The results of such research are being made available only incidentally. The views expressed do not constitute investment or any other advice and are subject to change. They do not necessarily reflect the views of any company in the BlackRock Group or any part thereof and no assurances are made as to their accuracy.

This document is for information purposes only and does not constitute an offer or invitation to anyone to invest in any BlackRock funds and has not been prepared in connection with any such offer.

**In Singapore,** this document is provided by BlackRock (Singapore) Limited (company registration number:200010143N) for use only with institutional investors as defined in Section 4A of the Securities and Futures Act, Chapter 289 of Singapore. This advertisement or publication has not been reviewed by the Monetary Authority of Singapore.

**In Hong Kong,** this material is issued by BlackRock Asset Management North Asia Limited and has not been reviewed by the Securities and Futures Commission of Hong Kong. This material is for distribution to "Professional Investors" (as defined in the Securities and Futures Ordinance (Cap.571 of the laws of Hong Kong) and any rules made under that ordinance.) and should not be relied upon by any other persons or redistributed to retail clients in Hong Kong.

**In South Korea,** this information is issued by BlackRock Investment (Korea) Limited. This material is for distribution to the Qualified Professional Investors (as defined in the Financial Investment Services and Capital Market Act and its sub-regulations) and for information or educational purposes only, and does not constitute investment advice or an offer or solicitation to purchase or sells in any securities or any investment strategies.

**In Taiwan,** independently operated by BlackRock Investment Management (Taiwan) Limited. Address: 28F., No. 100, Songren Rd., Xinyi Dist., Taipei City 110, Taiwan. Tel: (02)23261600.

**In Australia & New Zealand,** issued by BlackRock Investment Management (Australia) Limited ABN 13 006 165 975, AFSL 230 523 (BIMAL) for the exclusive use of the recipient, who warrants by receipt of this material that they are a wholesale client as defined under the Australian Corporations Act 2001 (Cth) and the New Zealand Financial Advisers Act 2008 respectively . BlackRock Investment Management (Australia) Limited ("BIMAL") is not licensed by a New Zealand regulator to provide 'Financial Advice Service' or 'Keeping, investing, administering, or managing money, securities, or investment portfolios on behalf of other persons'. BIMAL's registration on the New Zealand register of financial service providers does not mean that BIMAL is subject to active regulation or oversight by a New Zealand regulator. This material provides general information only and does not take into account your individual objectives, financial situation, needs or circumstances. Before making any investment decision, you should therefore assess whether the material is appropriate for you and obtain financial advice tailored to you having regard to your individual objectives, financial situation, needs and circumstances. Refer to BIMAL's Financial Services Guide on its website for more information. This material is not a financial product recommendation or an offer or solicitation with respect to the purchase or sale of any financial product in any jurisdiction. This material is not intended for distribution to, or use by, any person or entity in any jurisdiction or country where such distribution or use would be contrary to local law or regulation. BIMAL is a part of the global BlackRock Group which comprises of financial product issuers and investment managers around the world. BIMAL is the issuer of financial products and acts as an investment manager in Australia. BIMAL does not offer financial products to persons in New Zealand who are retail investors (as that term is defined in the Financial Markets Conduct Act 2013 (FMCA)). This material does not constitute or relate to such an offer. To the extent that this material does constitute or relate to such an offer of financial products, the offer is only made to, and capable of acceptance by, persons in New Zealand who are wholesale investors (as that term is defined in the FMCA). BIMAL, its officers, employees and agents believe that the information in this material and the sources on which it is based (which may be sourced from third parties) are correct as at the date of publication. While every care has been taken in the preparation of this material, no warranty of accuracy or reliability is given and no responsibility for the information is accepted by BIMAL, its officers, employees or agents. Except where contrary to law, BIMAL excludes all liability for this information.

**In China,** this material may not be distributed to individuals resident in the People's Republic of China ("PRC", for such purposes, not applicable to Hong Kong, Macau and Taiwan) or entities registered in the PRC unless such parties have received all the required PRC government approvals to participate in any investment or receive any investment advisory or investment management services.

**In Japan,** this is issued by BlackRock Japan. Co., Ltd. (Financial Instruments Business Operator: The Kanto Regional Financial Bureau. License No375, Association Memberships: Japan Investment Advisers Association, The Investment Trusts Association, Japan, Japan Securities Dealers Association, Type II Financial Instruments Firms Association) for Institutional Investors only. All strategies or products BLK Japan offer through the discretionary investment contracts or through investment trust funds do not guarantee the principal amount invested. The risks and costs of each strategy or product we offer cannot be indicated here because the financial instruments in which they are invested vary each strategy or product. Therefore, before deciding to receive our strategies or products, please refer to the document provided prior to the execution of agreement, prospectus, terms and conditions of investment trust and the explanatory document, etc. that will be delivered to you in accordance with each offering model and confirm the contents thereof.

**For Southeast Asia:** This document is issued by BlackRock and is intended for the exclusive use of any recipient who warrants, by receipt of this material, that such recipient is an institutional investors or professional/sophisticated/qualified/accredited/expert investor as such term may apply under the relevant legislations in Southeast Asia (for such purposes, **includes only Malaysia, the Philippines, Thailand, Brunei and Indonesia**). BlackRock does not hold any regulatory licenses or registrations in Southeast Asia countries listed above, and is therefore not licensed to conduct any regulated business activity under the relevant laws and regulations as they apply to any entity intending to carry on business in Southeast Asia, nor does BlackRock purport to carry on, any regulated activity in any country in Southeast Asia. BlackRock funds, and/or services shall not be offered or sold to any person in any jurisdiction in which such an offer, solicitation, purchase, or sale would be deemed unlawful under the securities laws or any other relevant laws of such jurisdiction(s).

This material is provided to the recipient on a strictly confidential basis and is intended for informational or educational purposes only. Nothing in this document, directly or indirectly, represents to you that BlackRock will provide, or is providing BlackRock products or services to the recipient, or is making available, inviting, or offering for subscription or purchase, or invitation to subscribe for or purchase, or sale, of any BlackRock fund, or interests therein. This material neither constitutes an offer to enter into an investment agreement with the recipient of this document, nor is it an invitation to respond to it by making an offer to enter into an investment agreement.

The distribution of the information contained herein may be restricted by law and any person who accesses it is required to comply with any such restrictions. By reading this information you confirm that you are aware of the laws in your own jurisdiction regarding the provision and sale of funds and related financial services or products, and you warrant and represent that you will not pass on or utilize the information contained herein in a manner that could constitute a breach of such laws by BlackRock, its affiliates or any other person.

The information provided here is neither tax nor legal advice and should not be relied on as such. Investment involves risk including possible loss of principal.

FOR INSTITUTIONAL, FINANCIAL PROFESSIONAL, PERMITTED, QUALIFIED CLIENT AND PROFESSIONAL, INSTITUTIONAL, WHOLESALE, QUALIFIED INVESTOR USE ONLY. THIS MATERIAL IS NOT TO BE REPRODUCED OR DISTRIBUTED TO PERSONS OTHER THAN THE RECIPIENT.

© 2024 BlackRock, Inc. or its affiliates. All rights reserved. BLACKROCK is a registered trademark of BlackRock, Inc., or its affiliates. All other trademarks are those of their respective owners.